

DREAM Station SCP1

Station Channel Meter Panel Installation Manual

DREAM Software Version: 1.1

Part No: DBE1201-A

Document No: 220



Important Notice

COPYRIGHT

The material in this document is copyright to Fairlight ESP Pty Ltd, and may not be quoted or reproduced in any form without written permission from the company.

Fairlight is a trademark of Fairlight ESP Pty Ltd. All other trademarks are the property of their respective owners.

LIMITED WARRANTY POLICY

All the software and hardware provided with, or purchased especially for, Fairlight products has been tested for functionality. Fairlight ESP Pty Ltd will make its best efforts to correct reported defects for future releases subject to technical practicabilities. Fairlight ESP will also replace any defective media on which software has been delivered provided that the item to be replaced is returned to the dealer who supported the product within 90 days of purchase.

Fairlight ESP Pty Ltd makes no warranty or representation either expressed or implied with respect to the system's performance or fitness for a particular purpose.

In no event will Fairlight ESP Pty Ltd be liable for direct or indirect damages arising from any defect in the product or its documentation. Further, Fairlight ESP Pty Ltd will not accept any liability for any programs, sounds, audio recording or sequences stored in or used with Fairlight products, including the cost of recovery of such data.

Product features and specifications are subject to change without notice. Fairlight ESP reserves the right to change any part of this document without notice.

The warranties, remedies and disclaimers above are exclusive and take precedence over all others, oral or written, express or implied, to the extent permitted by law in the geographical area of the product's use. No employee of Fairlight ESP, agent, distributor or employee of an agent or distributor is authorized to offer any variation from this policy.

Copyright © 2002
Fairlight ESP Pty Ltd,
Unit 2, 1 Skyline Place,
French's Forest, NSW 2086,
AUSTRALIA.
Telephone +61 2 8897 9999
Fax +61 2 8897 9900

OBTAINING TECHNICAL SUPPORT

Users requiring technical support should contact their local Fairlight office or distributor. Information can also be found on the world wide web at:

<http://www.fairlightesp.com>

FAIRLIGHT OFFICES WORLD-WIDE

USA West Coast

Fairlight USA
844 North Seward Street,
Hollywood, CA90038
USA
Tel: +1 323 465 0070
Fax: +1 323 465 0080

USA East Coast

Fairlight USA
2 West 45th Street, Penthouse
New York, NY 10036
USA
Tel: +1 212 819 1289
Fax: +1 212 819 0376

United Kingdom

Fairlight ESP Limited
Unit 12, Spectrum House
32-34 Gordon House Road
London NW5 1LP
England
Tel: + 44-20-7267-3323
Fax: + 44-20-7267-0919

France

Fairlight France
41-43 Rue des Peupliers
92100 Boulogne-Billancourt
Paris
France
Tel: +33 1 4610 9292
Fax: +33 1 4610 9295

Germany

Fairlight Deutschland GmbH
August-Bebel-Strasse 26-53
14482 Potsdam-Babelsberg
Berlin
Germany
Tel: +49 331 721 2930
Fax: +49 331 721 2933

Japan

Fairlight Japan Inc.
3-3-11 Ikejiri Setagaya-Ku
Tokyo
Japan 154-0001
Tel: +81 3 5432 4151
Freecall (Japan only): 0120 213 643
Fax: +81 3 5432 4533

Asia-Pacific

Fairlight ESP Pty. Ltd.
Unit 2, 1 Skyline Place,
Frenchs Forest NSW 2086
Australia
Tel: +61 2 8977 9999
Fax: +61 2 8977 9900

MANUAL ERRORS AND OMISSION

To help ensure that Fairlight provides the most accurate and comprehensive documentation, please report any errors or omissions to:

documentation@fairlightesp.com.au

Table of Contents

Chapter 1: Introduction

INTRODUCTION	1-1
ABOUT THIS MANUAL	1-1
USING THE STATION CHANNEL METER PANEL	1-1

Chapter 2: Installation

INTRODUCTION	2-2
MECHANICAL INSTALLATION	2-2
Tools Required:	2-2
CONNECTING THE STATION METER PANEL	2-2
Connecting Two Meters	2-3
CONFIGURATION	2-3
USB Installation	2-3
Cons-con	2-3
Configuring Two Meter Units	2-4
TESTING AND COMMISSIONING	2-4

Chapter 3: Specifications

WIRING AND CONNECTION DETAILS	3-2
Meter USB	3-2
DIMENSIONS AND WEIGHT	3-2
DREAM Station Main Meter Panel	3-2

Chapter 1 - Introduction

INTRODUCTION

The DREAM Station Channel Meter Panel provides high resolution signal level metering for the Fairlight DREAM Station integrated mixer/editor. The Station is part of a new family of products from Fairlight which marries together QDC processing with an ergonomic physical control surface in a combination that has a significant impact on productivity and efficiency. The Station and Station Sidecar combination offers a flexible and scaleable solution to a range of audio production and post-production tasks.

ABOUT THIS MANUAL

The DREAM Station Channel Meter Panel Installation Manual provides the information necessary to install and operate the unit with a DREAM Station Sidecar. This manual should be used in conjunction with the DREAM Station and Sidecar Installation and User Manuals to obtain complete instruction in the use and installation of the complete system.

This manual is designed to familiarize sound editors and engineers with the facilities provided by the Station Channel Meter Panel. The terminology and concepts used in this manual assume a reasonable knowledge regarding audio principles and studio procedures.

USING THE STATION CHANNEL METER PANEL

The Station Channel Meter Panel includes twelve, 55mm multi-segment bargraph LED signal level meters. The Station Channel Meter Panel displays the signal level of the feeds associated with the faders in the current Sidecar fader set. The meters display feed levels only. If a bus or link group is included in a fader set, those meters will show no signal.

Use the fader set keys to display the feeds you wish to meter on the Sidecar.

The Station Channel Meter Panel displays peak program level.

NOTES:

Chapter 2 - Installation

INTRODUCTION

The DREAM Station Channel Meter Panel is designed to be mounted directly to the rear of the DREAM Sidecar. One simple cable connection between the Sidecar and Meter Panel using the five pin XLR cable supplied, is also required.

MECHANICAL INSTALLATION

Tools Required:

- 1 x #2 Pozi-drive screw driver
- Small open-ended or adjustable spanner

- Step 1 Carefully unpack the Station Channel Meter Panel.
- Step 2 Remove the two screws on the rear of the Sidecar as indicated below. Retain these screws.
- Step 3 Align the Station Channel Meter mounting brackets with the mounting holes on the rear of the Sidecar.
- Step 4 Fasten the mounting brackets by inserting the M4 hex head bolts supplied with the Channel Meter. Carefully tighten the bolts with a spanner

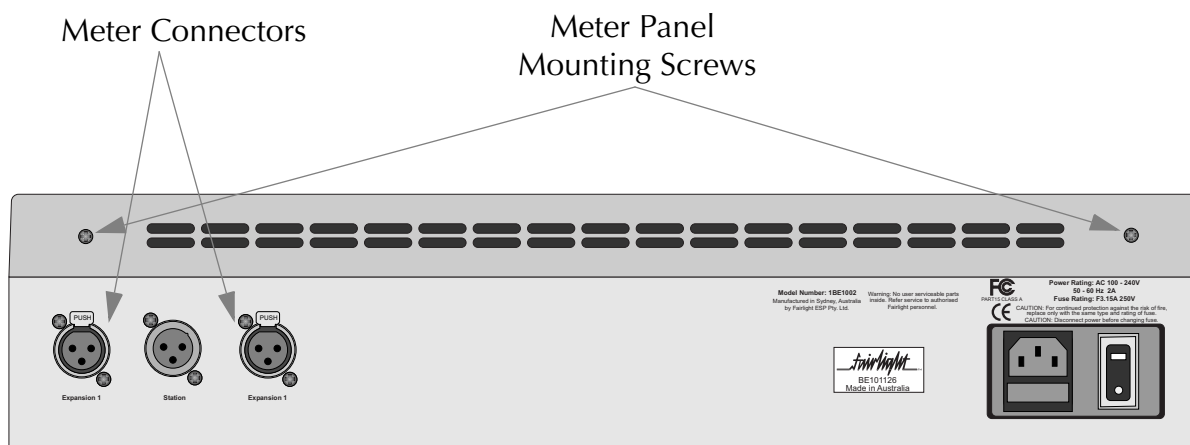


Figure 1: Station Console Rear Panel Connections

CONNECTING THE STATION METER PANEL

- Step 1 Connect the 5-pin XLR USB cable (part no. AMIX119-A) from the female XLR labelled **Meter** or **Expansion** on the rear of the Sidecar to the male XLR on the Station Channel Meter Panel.

Connecting Two Meters

When more than one Sidecar is present, the meters should be connected as shown below. The Sidecars must both be connected directly to the Station.

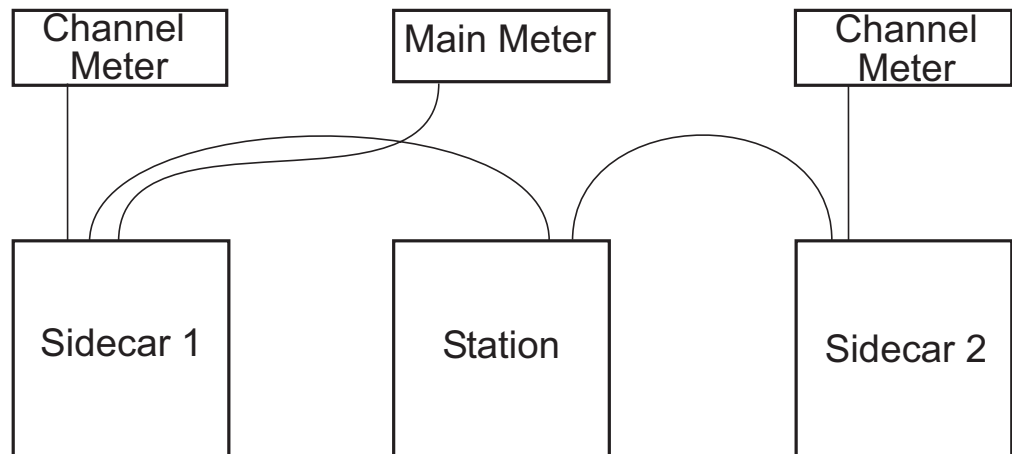


Figure 2: Connecting Two Sidecars

CONFIGURATION

If the Meter Panel has been purchased separately from the Station, the Station must be configured to establish communication with the Meter Panel via USB. Follow these steps to configure the Meter Panel. The steps are described in detail below:

1. Connect the Meter Panel prior to turning on the Station or Sidecar.
2. Turn on the Sidecar, then the Station. During start-up Windows will detect the new Meter Panel hardware. Install the USB drivers as described below.
3. Run the console configuration utility *Cons-con* to add the Meter Panel to the Station configuration.

USB Installation

The USB driver for the Meter Panel must be installed the first time it is connected to the system.

- | | |
|--------|---|
| Step 1 | Ensure the Meter Panel is connect to the Station and that the Station is running. |
| Step 2 | During boot-up the Windows Found New Hardware dialog box will appear. Click the Browse button and navigate to the following directory: <i>C:\DREAM Drivers\USB drivers\W2000</i> . Select <i>FairUsb.inf</i> and click OK to complete the driver installation. |

Cons-con

The Meter Panel must be added to the Station console configuration. This is achieved with the *Cons-con* application.

- | | |
|--------|--|
| Step 1 | While the DREAM Start splash screen is displayed, hold down the Shift key and press Pause/Break and type SU Enter to enter super user mode. |
| Step 2 | Use the trackball to click on the Binnacle Cut key to launch <i>Cons-con</i> , the console configuration utility. Alternatively, click on My Computer on the Windows desktop and navigate to <i>C:\Projects\mixers\fmc\system\Cons-con.exe</i> . |

- Step 3 Select **Station** console type and click the **Add Panel** button to add panels one at a time.
- Step 4 Select panel number **Panel 15**, then select **StationMainMeters** type. Click **OK** to add the panel.

To remove an accidentally added panel, select the panel and click **Remove Panel**. To modify a panel, select the panel and click **Modify Panel**.

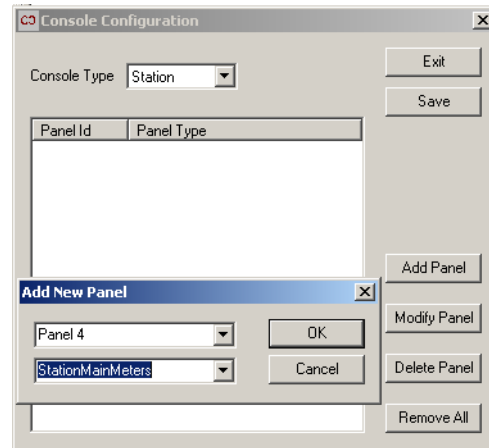


Figure 3: ConsCon Window

Configuring Two Meter Units

If two Channel Meters are to be fitted, the Fairlight distributor must be informed prior to shipping in order for the panel configuration of the second meter to be modified. When two Channel Meters are present, the first meter is configured with panel ID 15, the second meter with ID 16.

TESTING AND COMMISSIONING

Once the Station Channel Meter has been installed, configured and calibrated, refer to the Station manual for operational procedures that will assist in testing its operation within the studio environment.

NOTES:

Chapter 3 - Specifications

WIRING AND CONNECTION DETAILS

Connector sex described is the panel mount connector on the rear of the unit.

Meter USB

Description: USB and DC Power connection.

Connector: 5 Pin XLR Male

XLR5	SIGNAL	PAIR
PIN 1	USB +	1
PIN 2	0 V	
PIN 3	12 V	
PIN 4	0 V	
PIN 5	USB -	1
SHELL	SHIELD	1

DIMENSIONS AND WEIGHT

DREAM Station Main Meter Panel

Width	555 mm / 21.85"
Depth	50 mm / 2"
Height	120 mm / 4.7"
Fitted Height	215 mm / 8.5"
Fitted Depth from rear of Sidecar	85 mm / 3.4"
Net Weight	2.5 kg

Note: All specifications subject to change without notice.

Index

A

- Add Panel 2-4
- AMIX119-A 2-2

C

- Configuration 2-3
- Connecting 2-2
- Cons-con 2-3

D

- Depth 3-2
- Dimensions 3-2
- DREAM Start 2-3

F

- Found New Hardware 2-3

H

- Height 3-2

M

- Mechanical Installation 2-2
- Meter 2-2
- Modify Panel 2-4

R

- Remove Panel 2-4

S

- Specifications 3-2
- Station 2-2

U

- USB 2-2, 3-2
- USB Installation 2-3
- Using the Meter Panel 1-1

W

- Weight 3-2
- Width 3-2
- Wiring 3-2

X

- XLR 2-2, 3-2